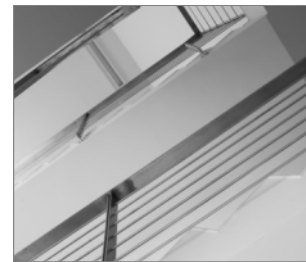


## R-STUDS Metric Threaded Rods - Hot Dip Galvanized

Threaded rod for outdoor applications increased corrosion resistance due to hot dip zinc external protection layer



### Product information

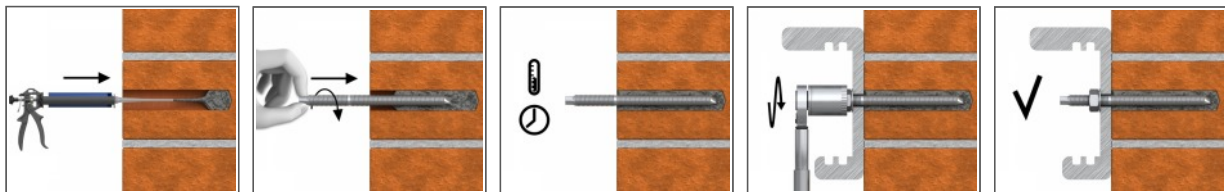
#### Features and benefits

- Threaded rod made of hot dip galvanized steel is suitable for outdoor use and in damp conditions
- Can be post-installed through fixture in some cases. (Consult technical advisory service)
- Hexagonal head for convenient use with torque wrench

#### Applications

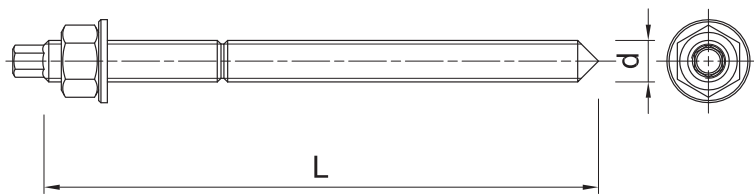
- Fastening with bonded anchors
- Balustrading & handrails
- Barriers
- Cable trays
- Consoles
- Curtain walling
- Formwork support systems
- Heavy machinery
- Lamps
- Safety barriers
- Road Signs
- Railings
- Public seating

### Installation guide



1. Drill hole to the required diameter and depth for stud size being used.
2. Clean the hole thoroughly with hand pump and hole brush
3. If required, insert the mesh sleeve into position
4. Fill hole with the required resin to the recommended fill level. (Follow the relevant instructions for the resin product)
5. Insert the threaded stud slowly and with a slight twisting motion, until the required embedment depth is reached
6. Leave undisturbed until curing time of resin has elapsed
7. Attach fixture and tighten the nut to the required installation torque

### Product information



Size	Product Code	Anchor		Fixture				
		Diameter	Length	Max. thickness $t_{fix}$ for:			Hole diameter	Max. thickness
		d	L	$h_{nom,min}$	$h_{nom,std}$	$h_{nom,max}$	$d_f$	$t_{fix}$
		[mm]	[mm]	[mm]	[mm]	[mm]	[mm]	[mm]
M8	R-STUDS-08110-HDG	8	110	40	20	-	9	20
M10	R-STUDS-10130-HDG	10	130	48	28	-	12	33
M12	R-STUDS-12160-HDG	12	160	65	35	-	14	50
M16	R-STUDS-16190-HDG	16	190	71	46	-	18	66
M20	R-STUDS-20260-HDG	20	260	117	67	-	22	-
M24	R-STUDS-24300-HDG	24	300	132	62	-	26	-

### Product commercial data

Size	Product Code	Anchor		Quantity [pcs]			Weight [kg]			Bar Codes
		Diameter [mm]	Length [mm]	Box	Outer	Pallet	Box	Outer	Pallet	
M8	R-STUDS-08110-HDG	8	110	10	10	1280	0.70	0.70	119.6	5906675388632
M10	R-STUDS-10130-HDG	10	130	10	10	500	0.80	0.80	70.0	5906675201467
M12	R-STUDS-12160-HDG	12	160	10	10	500	2.3	2.3	145.0	5906675201474
M16	R-STUDS-16190-HDG	16	190	10	10	500	2.5	2.5	155.0	5906675324876
M20	R-STUDS-20260-HDG	20	260	5	5	300	3.0	3.0	210.0	5906675201481
M24	R-STUDS-24300-HDG	24	300	2	2		0.20	0.20		5906675091310