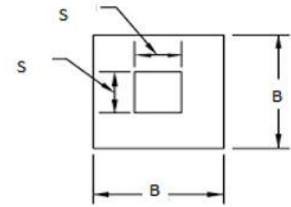
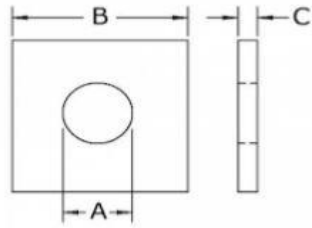


Square Plate Washers



Material	Finish
Mild Steel	Self Colour
Mild Steel	Zinc Plated
Mild Steel	Galvanised

Square Plate Washers			
Plate Width	Plate Thickness C	Bolt Diameter A	Bolt Diameter S
40	3	M6 - M12	
40	5	M6 - M20	
50	3	M6 - M24	
50	6	M12 - M30	M12 - M16
75	6	M12 - M30	M12 - M24
75	10	M12 - M30	M12 - M30
100	6	M12 - M24	M12 - M30
100	8	M16 - M30	M16 - M30
100	10	M12 - M36	M12 - M36
100	12	M16 - M36	M12 - M48
100	15	M16 - M36	M12 - M48
120	10	M16 - M30	M16 - M30
120	15	M16 - M30	M16 - M30
120	20	M20 - M30	M20 - M30
150	10	M16 - M42	M12 - M48
150	12	M16 - M30	M16 - M30
150	15	M16 - M42	M16 - M48
150	20	M20 - M36	M20 - M36